

MANGUSTA



**PETREL GLOBAL SHIPS
& BOATS TRADING LLC**

Office 621, 6th Floor Block A, Business Village.
Port-Saeed Deira, Dubai UAE
www.petrel-global.com, tel.: +971 52 821 6411

MAXI OPEN 110

TECHNICAL DATA

Type	Twin water-jets diesel Mediterranean Sport motoryacht of contemporary design
Hull Material	Advanced GRP single skin composite structure based on Vinyl-ester Resin
LOA, m	33.77
Beam, m	7.18
Draught, m	~ 1.7
Fuel tank, l.	13,000
Water tank, l.	2,000
Engines 2 x Volvo IPS	1 050(1 350)
Generator	2 X MTU 16V 2000 M96L 2600 HP each
Cruising speed, knots	28
Max speed, knots	33
Cabins	1 OWNER + 1 VIP + 2 GUEST
Main Engines Power	2 X KOHLER 35 kW EFKOZD
RANGE AT ECONOMICAL CRUISING SPEED	400 NAUTICAL MILES

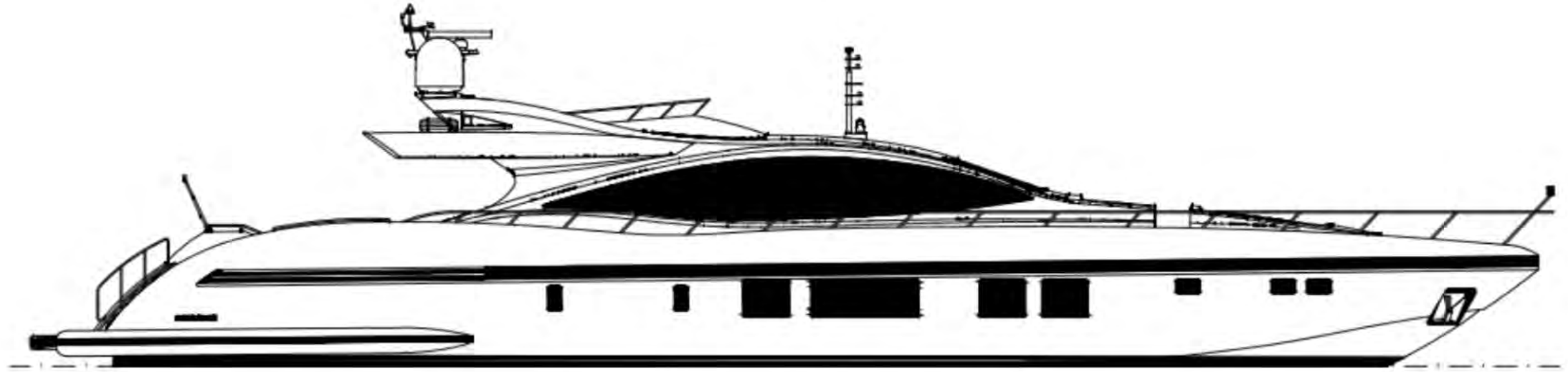


LAYOUT

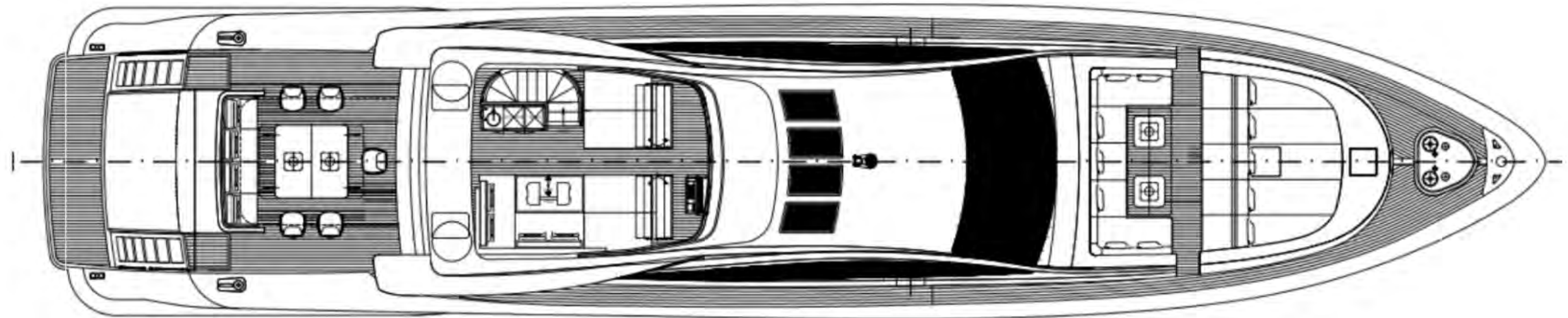
MAXI OPEN 110



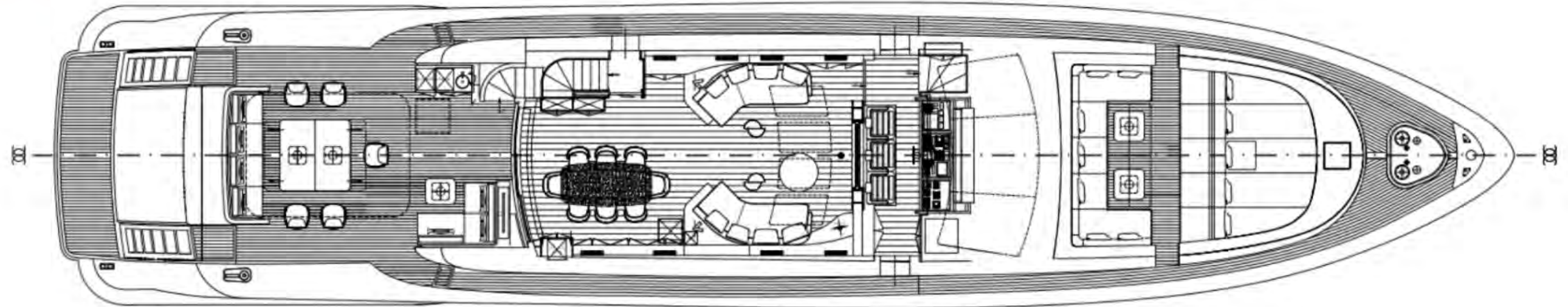
PROFILE



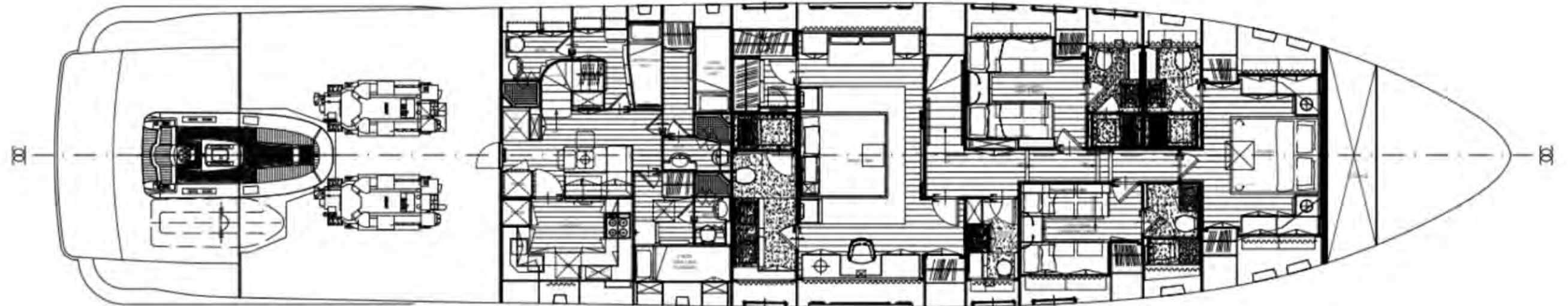
FLY DECK



MAIN DECK



LOWER DECK





MANGUSTA



**PETREL GLOBAL SHIPS
& BOATS TRADING LLC**

Office 621, 6th Floor Block A, Business Village,
Port-Saeed Deira, Dubai UAE
www.petrel-global.com, tel.: +971 52 821 6411

MAXI OPEN 110



MANGUSTA



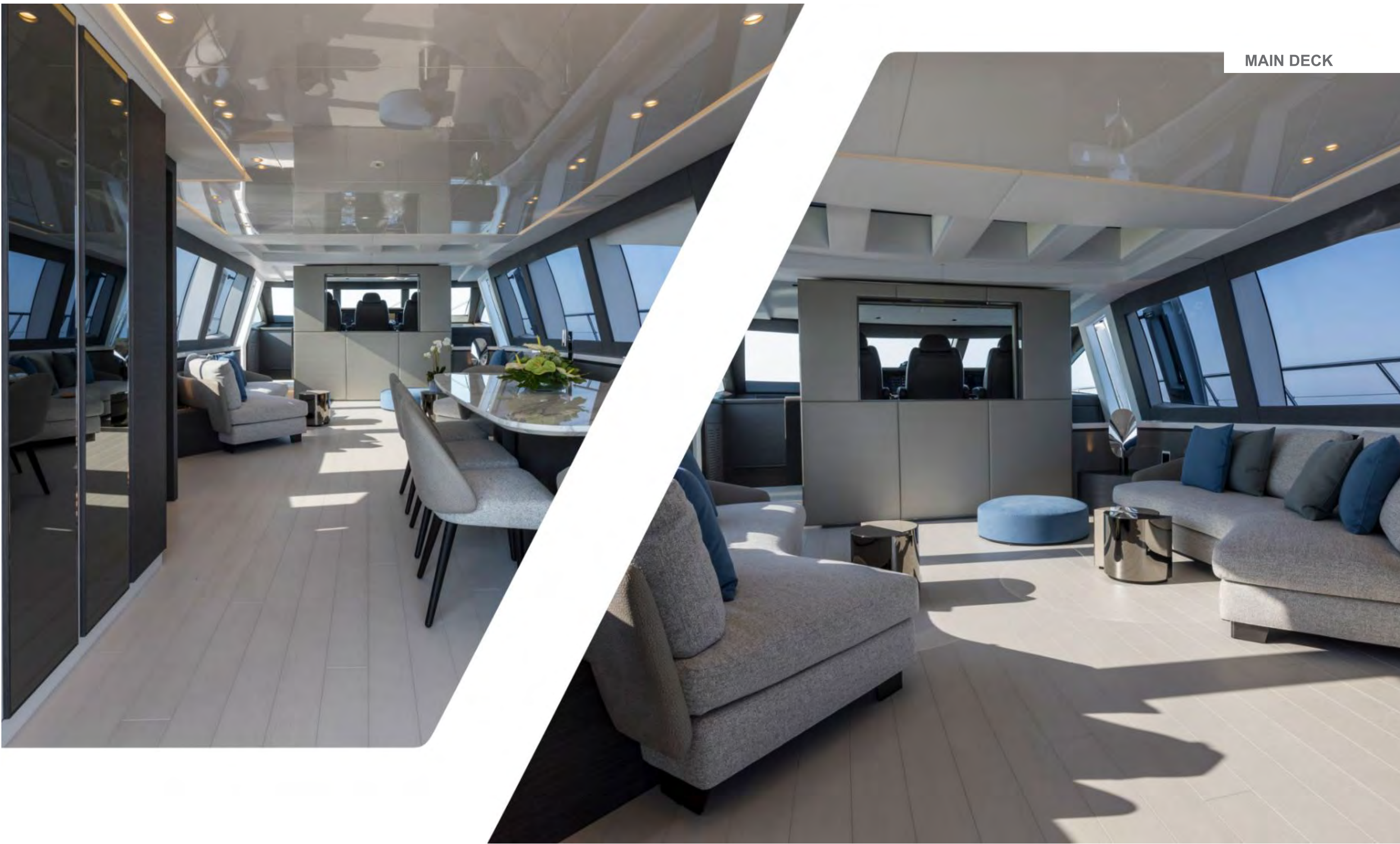
**PETREL GLOBAL SHIPS
& BOATS TRADING LLC**

Office 621, 6th Floor Block A, Business Village,
Port-Saeed Deira, Dubai UAE
www.petrel-global.com, tel.: +971 52 821 6411

MAXI OPEN 110







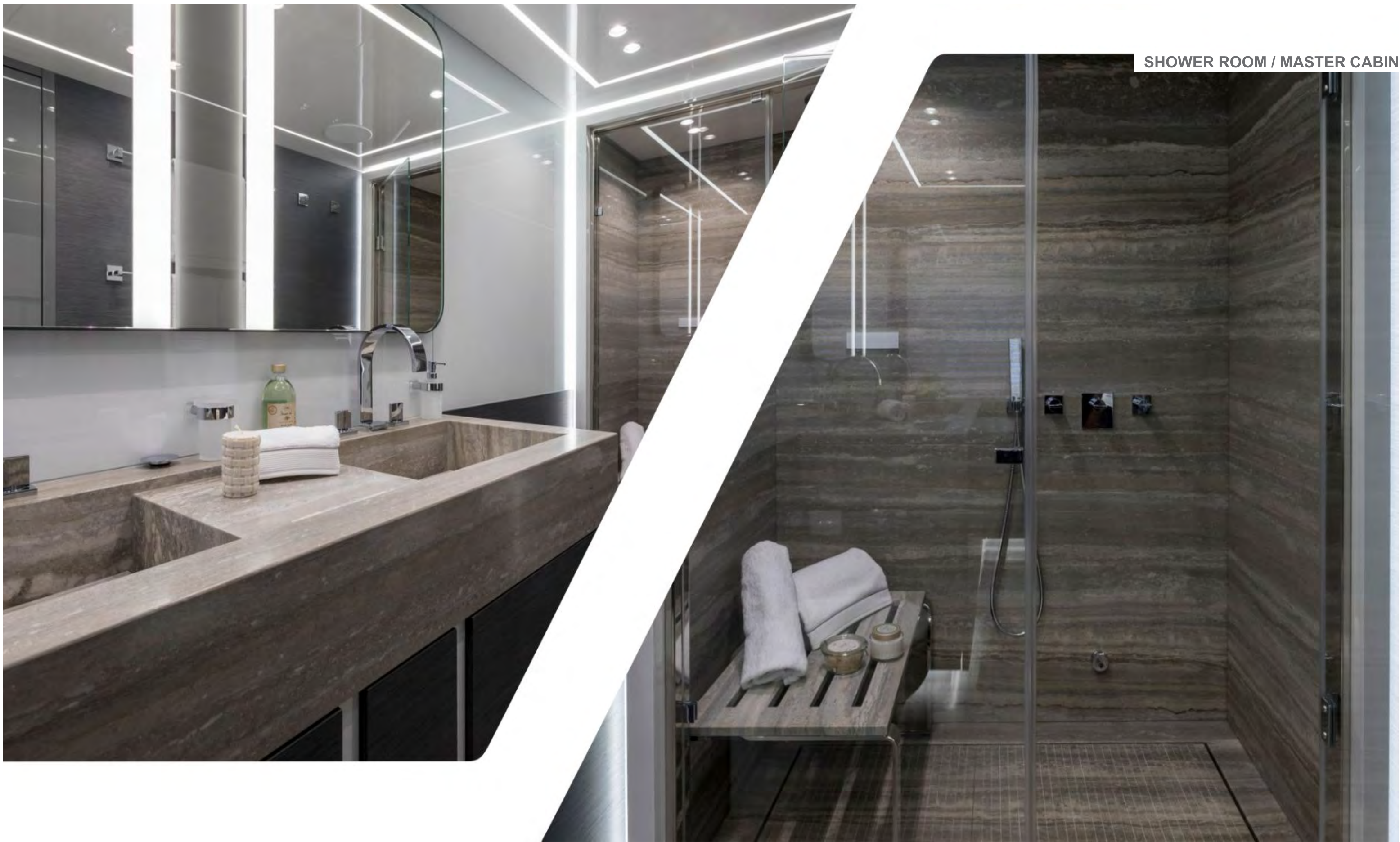






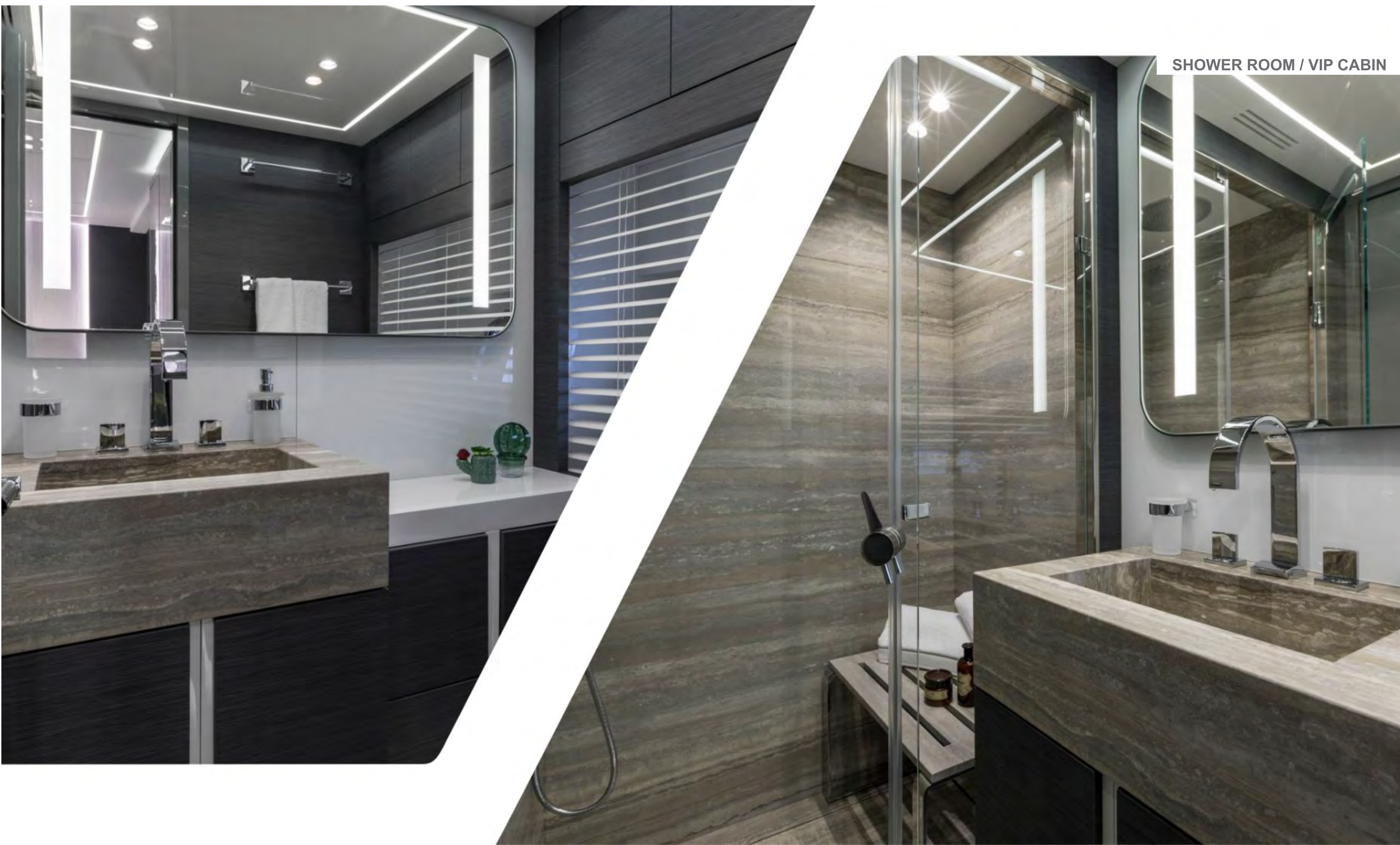


















EY





MAXI OPEN 110



EQUIPMENT

PROPULSION

- Two MTU four stroke marine diesel propulsion engines. Each engine is fitted with a ZF flange mounted marine transmission a Kamewa water jet

REDUCTION GEARS

- Two flange-mounted reduction gears ZF model 5000 with a reduction ratio selected in accordance to Water Jet supplier

WATERJETS

- Two waterjets Kamewa model 63 S3 connected to the output flange of the gearbox

STEERING SYSTEM

- Kamewa steering system

DIESEL GENERATOR

- Two KHOLER model 35 EFKOZD marine generator sets 35 kW, 400 VAC, 50 Hz, three-phase

BOW THRUSTER SYSTEM

- Side Power® Electric bow-thruster, power ~28kW – Thrust 450Kgf nominal thrust, with joystick controls at the helmsman console

STABILIZER SYSTEM

- 1 Stabilizer by Seakeeper mod. 20HD (26 in Booster Mode) for zero speed and underway

TENDER AND JET SKI

- TENDER 1 x Williams Diesel Jet

ONBOARD SYSTEMS

FUEL SYSTEM

- Direct suction from structural GRP tank through two different fill-caps one on port and one on stbd side

BILGE/FIRE-FIGHTING PUMP SYSTEM

- #1 pump Gianneschi® P&B / ACB 431/B (or equivalent) – 400V - 2,2 Kw
- #1 pump Gianneschi® P&B / ACB 431/B (or equivalent) – 24V - 1,5 Kw

DECK EQUIPMENT

- 2 X SHHP 154kg galvanized anchors
- 2 X 14mm 125m galvanized chain
- 2 X Lofran's Ercole Verticale 4.0 Kw
- 2 X Lofran's T2000 2.2 Kw
- 2 X Sanshine HR-10 12 search lights
- Kahlenberg S-0 air horns

NOISE, VIBRATION AND INSULATION MEASURES

- Flexible installation of engines, gears and gen-sets
- Structure under the main deck in the engine room
- Construction of watertight bulkheads
- Construction of casings
- Application of absorbing compounds in specific areas
- Flexible installations of all noise and vibration producing equipment items
- Expansion joints in pipelines
- Mufflers and sound dampers on Generator exhaust

SAFETY EQUIPMENT

- According to Class Requirement

NAVIGATION SYSTEMS & CCTV

- 1 X VIDEOMATRIX BONING AHD-VDCU 8/8
- 3 X VIDEO CONTROL PANEL BONING AHD-VCS
- 2 X MOTOR DOME COLOUR CAMERA BONING
- 1 X M-SERIES FLIR SYSTEM M-625XP

WHEELHOUSE

- MONITOR HATTELAND X-SERIES HD12T21 MMD (CREW MESS)
- 2 X MONITOR HATTELAND 24" HD 24T21MMD TOUCH SCREEN
- 2 X MONITOR HATTELAND 19" HD 19T21MMD TOUCH SCREEN
- 2 X NSO EVO2 SIMRAD PROCESSOR BOX1 X OP 40 CONTROLLER
- 1X OP 40 CONTROLLER
- 1 X CHART NAVIONICS PLATINUM PLUS 33+P
- 1 X HS70 GPD COMPASS
- 1 X HR80 REPETER GYRO
- 1 X RADAR TX06S-01
- 1 X BSM-1 SOUNDER-M260 (in-hull mounted transducer)
- 1 X SIMRAD STRUCTURE SCAN HD IMAGING MODULE
- IS20 WIND MAST HEAD UNIT
- IS20 COLOR WIND DISPLAY
- S40 COLOR INSTRUMENT DISPLAY
- 1 X AP70 AUTOPILOT
- 1 X RC42 FLUXGATE GYRO
- 1 X AC80A AUTOPILOT PROCESSOR
- 1 X QS 80 AUTOPILOT REMOTE CONTROL
- 1 X AIS SYSTEM NAIS400
- 1 X SAILOR VHF DSC 6222
- 1 X SIMRAD VHF/AIS RS90
- 1 X SIMRAD VHFHS35 Wireless Handset CREW AREA
- 1 X FURUNO NAVTEX NX700



EQUIPMENT

FLY DECK

- 2 X MONITOR BOENING M15-L HI-BRIGHT LED
- 1 X OP 40 CONTROLLER
- 1 X SIMRAD VHFHS35 Wireless Handset
- 1 X QS 80 AUTOPILOT REMOTE

CONTROL

- 1 X INTERCOM SYSTEM PHONOTECH CIS 3100
- 1 X 9052 - SUB STATION ENGINE ROOM
- 1 X 9003 - SUBSTATION FOR HEADSET CREW

MESS

- 1 X 9001 - INDOOR UNIT, WALL MOUNTED

COMMUNICATION

- 1 X SAILOR VHF DSC 6222
- 1 X SIMRAD VHF/AIS RS90
- 1 X SIMRAD VHFHS35 Wireless Handset CREW

AREA

- 1 X SIMRAD VHFHS35 Wireless Handset FLYBRIDGE

ANTENNAS

- 1 X 01 GS15 GPS ANTENNA

AFT DECK HI-FI

- 1 X AMPLIFIER MULTICHANEL ECLER MPA680
- 4 X SONANCE XTR 6,5" WATERPROOF LOUDSPEAKERS
- 2 X SONANCE VP65S XT WATERPROOF LOUDSPEAKERS

FLY DECK HI-FI

- 1 X A/V RECEIVER DENON AVR X-1100 SERIES
- 4 X SONANCE STR 6.5" WATERPROOF LOUDSPEAKERS

DECK HI-FI

- 1 X TV 60" SAMSUNG 6000 SERIES 3D FULL
- 1 X JM LAB CUB2 SUBWOOFER
- 5 X JM LAB IW 706 SPEAKERS
- 1 X A/V RECEIVER DENON AVR X-4100 SERIES
- 1 X DVD BDP S590 A/V PLAYER
- 1 X SEALUX HD/3D A/V CLIENT
- 1 X APPLE IPAD MINI 16gb
- 1 X SATELLITE DECODER
- 1 X APPLE TV

FORE DECK HI-FI

- 1 X A/V RECEIVER DENON AVR X-1100 SERIES
- 2 X SONANCE XTR 6,5" WATERPROOF LOUDSPEAKERS
- 2 X FUSION MS-FR4021 LOUDSPEAKERS 4"
- 1 X APPLE IPAD MINI 16gb

OWNER'S CABIN HI -FI

- 1 X TV 46" SAMSUNG 8000 SERIES
- 1 X JM LAB CUB2 SUBWOOFER
- 5 X JM LAB IW 706 SPEAKERS
- 2 X JM LAB IW 106 SPEAKERS BATHROOM
- 1 X A/V RECEIVER DENON AVR X-4100 SERIES
- 1 X DVD BDP S590 A/V PLAYER
- 1 X SEALUX HD/3D A/V CLIENT
- 1 X APPLE IPAD MINI 16gb
- 1 X SATELLITE DECODER
- 1 X APPLE TV

CAPTAIN CABIN HI-FI

- 1 X TV LED SAMSUNG 22" H5610 SERIES
- 2 X JM LAB IW 106 SPEAKERS
- 1 X A/V RECEIVER DENON AVR X-1100 SERIES
- 1 X SEALUX HD/3D A/V CLIENT DVD READER
- 1 X APPLE IPAD MINI 16gb
- 1 X SATELLITE DECODER

CREW CABIN HI-FI

- 4 X PHONOCAR VM194-ROOF MONITOR 12,1" DVD/USB/SD
- 4 X INFRARED HEADPHONES

CINEMA ROOM HI -FI

- 1 X TV LED SAMSUNG 55" 8000 SERIES
- 4 X JM LAB IW 106 SPEAKERS
- 1 X JM LAB SIB XL (CENTRAL SPEAKER)
- 1 X JM LAB CUB2 SUBWOOFER
- 1 X A/V RECEIVER DENON AVR X-1100 SERIES
- 1 X SONY PLAYSTATION4
- 1 X SEALUX HD/3D A/V CLIENT
- 1 X APPLE IPAD MINI 16gb
- 1 X SATELLITE DECODER (Owner's Supply)
- 1 X APPLE TV

VIP CABIN HI -FI

- 1 X TV LED SAMSUNG 32" H5500
- 1 X JM LAB CUB2 SUBWOOFER
- 5 X JM LAB IW 106 SPEAKERS
- 1 X A/V RECEIVER DENON AVR X -1100 SERIES
- 1 X SEALUX HD/3D A/V CLIENT DVD READER
- 1 X APPLE IPAD MINI 16gb
- 1 X SATELLITE DECODER
- 1 X APPLE TV

GUEST CABIN HI -FI

- 1 X TV LED SAMSUNG 32 H5500
- 2 X JM LAB IW 106 SPEAKERS
- 1 X JM LAB CUB2 SUBWOOFER
- 1 X A/V RECEIVER DENON AVR X -1100 SERIES
- 1 X SEALUX HD/3D A/V CLIENT DVD READER
- 1 X APPLE IPAD MINI 16gb
- 1 X SATELLITE DECODER
- 1 X APPLE TV

CREW MESS

- 1 X TV LED SAMSUNG 22" H5610
- 4 X JM LAB IW 106 SPEAKERS (2 GALLEY)
- 1 X A/V RECEIVER DENON AVR X-3100 SERIES
- 1 X SEALUX HD/3D A/V CLIENT DVD READER
- 1 X APPLE IPAD MINI 16gb
- 1 X SATELLITE DECODER





MANGUSTA



**PETREL GLOBAL SHIPS
& BOATS TRADING LLC**

Office 621, 6th Floor Block A, Business Village,
Port-Saeed Deira, Dubai UAE
www.petrel-global.com, tel.: +971 52 821 6411

MAXI OPEN 110



MANGUSTA



**PETREL GLOBAL SHIPS
& BOATS TRADING LLC**

Office 621, 6th Floor Block A, Business Village,
Port-Saeed Deira, Dubai UAE
www.petrel-global.com, tel.: +971 52 821 6411

MAXI OPEN 110

MANGUSTA



**PETREL GLOBAL SHIPS
& BOATS TRADING LLC**

Office 621, 6th Floor Block A, Business Village,
Port-Saeed Deira, Dubai UAE
www.petrel-global.com, tel.: +971 52 821 6411

MAXI OPEN 110