

# CUSTOM LINE Saetta 106



**CUSTOM LINE**  
EXCLUSIVE DEALER



**PETREL GLOBAL SHIPS  
& BOATS TRADING LLC**

Office 621, 6th Floor Block A, Business Village.  
Port-Saeed Deira, Dubai UAE  
[www.petrel-global.com](http://www.petrel-global.com), tel.: +971 52 821 6411

#27



LOA	32,82 [m] - 107 ft 8 in
LH	32,82 [m] - 107 ft 8 in
LWL	26,74 [m] - 87 ft 9 in
Max beam	7,40 [m] - 24 ft 3 in
Draft	2,03 [m] - 6 ft 8 in
Unladen displacement	126.000 [kg] - 277,782 [lbs]
Laden displacement	146.000 [kg] - 321,875 [lbs]
Fuel	14.700 [l] - 3,883 [US gal]
Water	3.000 [l] - 793 [US gal]
Material	GRP
People on board	20
Engine Nr. 2	MTU 16V 2000 M96L
Engine HP	2638
Transmission	Shaft line
Max speed	26 [kn]
Cruise speed	22 [kn]
Economic cruising speed	12 [kn]
Range at cruising speed	400 [nm]
Range at economic cruising speed	1000 [nm]
Cabins	5
Crew cabins	3 standard
Bathrooms	6
Bathrooms in crew quarter	3
Classification	RINA Class Certificate for Pleasure Yachts, C X HULL, • MACH, Y, Unrestricted Navigation





**CUSTOM LINE**  
EXCLUSIVE DEALER



**PETREL GLOBAL SHIPS  
& BOATS TRADING LLC**

Office 621, 6th Floor Block A, Business Village,  
Port-Saeed Deira, Dubai UAE  
[www.petrel-global.com](http://www.petrel-global.com), tel.: +971 52 821 6411

Saetta 106

3



**CUSTOM LINE**  
EXCLUSIVE DEALER



**PETREL GLOBAL SHIPS  
& BOATS TRADING LLC**

Office 621, 6th Floor Block A, Business Village,  
Port-Saeed Deira, Dubai UAE  
[www.petrel-global.com](http://www.petrel-global.com), tel.: +971 52 821 6411

Saetta 106

4



**CUSTOM LINE**  
EXCLUSIVE DEALER



**PETREL GLOBAL SHIPS  
& BOATS TRADING LLC**

Office 621, 6th Floor Block A, Business Village,  
Port-Saeed Deira, Dubai UAE  
[www.petrel-global.com](http://www.petrel-global.com), tel.: +971 52 821 6411

Saetta 106

5



**CUSTOM LINE**  
EXCLUSIVE DEALER



**PETREL GLOBAL SHIPS  
& BOATS TRADING LLC**

Office 621, 6th Floor Block A, Business Village,  
Port-Saeed Deira, Dubai UAE  
[www.petrel-global.com](http://www.petrel-global.com), tel.: +971 52 821 6411

Saetta 106

6



**CUSTOM LINE**  
EXCLUSIVE DEALER



**PETREL GLOBAL SHIPS  
& BOATS TRADING LLC**

Office 621, 6th Floor Block A, Business Village,  
Port-Saeed Deira, Dubai UAE  
[www.petrel-global.com](http://www.petrel-global.com), tel.: +971 52 821 6411

**Saetta 106**

**7**



**CUSTOM LINE**  
EXCLUSIVE DEALER



**PETREL GLOBAL SHIPS  
& BOATS TRADING LLC**

Office 621, 6th Floor Block A, Business Village,  
Port-Saeed Deira, Dubai UAE  
[www.petrel-global.com](http://www.petrel-global.com), tel.: +971 52 821 6411

**Saetta 106**

8



**CUSTOM LINE**  
EXCLUSIVE DEALER



**PETREL GLOBAL SHIPS  
& BOATS TRADING LLC**

Office 621, 6th Floor Block A, Business Village.  
Port-Saeed Deira, Dubai UAE  
[www.petrel-global.com](http://www.petrel-global.com), tel.: +971 52 821 6411

**Saetta 106**

9



**CUSTOM LINE**  
EXCLUSIVE DEALER



**PETREL GLOBAL SHIPS  
& BOATS TRADING LLC**

Office 621, 6th Floor Block A, Business Village,  
Port-Saeed Deira, Dubai UAE  
[www.petrel-global.com](http://www.petrel-global.com), tel.: +971 52 821 6411

**Saetta 106**

**10**



**CUSTOM LINE**  
EXCLUSIVE DEALER



**PETREL GLOBAL SHIPS  
& BOATS TRADING LLC**

Office 621, 6th Floor Block A, Business Village,  
Port-Saeed Deira, Dubai UAE  
[www.petrel-global.com](http://www.petrel-global.com), tel.: +971 52 821 6411

**Saetta 106**





**CUSTOM LINE**  
EXCLUSIVE DEALER



**PETREL GLOBAL SHIPS  
& BOATS TRADING LLC**

Office 621, 6th Floor Block A, Business Village.  
Port-Saeed Deira, Dubai UAE  
[www.petrel-global.com](http://www.petrel-global.com), tel.: +971 52 821 6411

**Saetta 106**

**12**



**CUSTOM LINE**  
EXCLUSIVE DEALER



**PETREL GLOBAL SHIPS  
& BOATS TRADING LLC**

Office 621, 6th Floor Block A, Business Village,  
Port-Saeed Deira, Dubai UAE  
[www.petrel-global.com](http://www.petrel-global.com), tel.: +971 52 821 6411

**Saetta 106**

**13**



**CUSTOM LINE**  
EXCLUSIVE DEALER



**PETREL GLOBAL SHIPS  
& BOATS TRADING LLC**

Office 621, 6th Floor Block A, Business Village,  
Port-Saeed Deira, Dubai UAE  
[www.petrel-global.com](http://www.petrel-global.com), tel.: +971 52 821 6411

**Saetta 106**

**14**



**CUSTOM LINE**  
EXCLUSIVE DEALER



**PETREL GLOBAL SHIPS  
& BOATS TRADING LLC**

Office 621, 6th Floor Block A, Business Village,  
Port-Saeed Deira, Dubai UAE  
[www.petrel-global.com](http://www.petrel-global.com), tel.: +971 52 821 6411

**Saetta 106**

**15**



**CUSTOM LINE**  
EXCLUSIVE DEALER



**PETREL GLOBAL SHIPS  
& BOATS TRADING LLC**

Office 621, 6th Floor Block A, Business Village,  
Port-Saeed Deira, Dubai UAE  
[www.petrel-global.com](http://www.petrel-global.com), tel.: +971 52 821 6411

**Saetta 106**

**16**



**CUSTOM LINE**  
EXCLUSIVE DEALER



**PETREL GLOBAL SHIPS  
& BOATS TRADING LLC**

Office 621, 6th Floor Block A, Business Village.  
Port-Saeed Deira, Dubai UAE  
[www.petrel-global.com](http://www.petrel-global.com), tel.: +971 52 821 6411

**Saetta 106**

**17**



**CUSTOM LINE**  
EXCLUSIVE DEALER



**PETREL GLOBAL SHIPS  
& BOATS TRADING LLC**

Office 621, 6th Floor Block A, Business Village,  
Port-Saeed Deira, Dubai UAE  
[www.petrel-global.com](http://www.petrel-global.com), tel.: +971 52 821 6411

**Saetta 106**

**18**



**CUSTOM LINE**  
EXCLUSIVE DEALER



**PETREL GLOBAL SHIPS  
& BOATS TRADING LLC**

Office 621, 6th Floor Block A, Business Village,  
Port-Saeed Deira, Dubai UAE  
[www.petrel-global.com](http://www.petrel-global.com), tel.: +971 52 821 6411

**Saetta 106**

**19**



**CUSTOM LINE**  
EXCLUSIVE DEALER



**PETREL GLOBAL SHIPS  
& BOATS TRADING LLC**

Office 621, 6th Floor Block A, Business Village,  
Port-Saeed Deira, Dubai UAE  
[www.petrel-global.com](http://www.petrel-global.com), tel.: +971 52 821 6411

**Saetta 106**

**20**



**CUSTOM LINE**  
EXCLUSIVE DEALER



**PETREL GLOBAL SHIPS  
& BOATS TRADING LLC**

Office 621, 6th Floor Block A, Business Village.  
Port-Saeed Deira, Dubai UAE  
[www.petrel-global.com](http://www.petrel-global.com), tel.: +971 52 821 6411

Saetta 106

21



**CUSTOM LINE**  
EXCLUSIVE DEALER



**PETREL GLOBAL SHIPS  
& BOATS TRADING LLC**

Office 621, 6th Floor Block A, Business Village.  
Port-Saeed Deira, Dubai UAE  
[www.petrel-global.com](http://www.petrel-global.com), tel.: +971 52 821 6411

**Saetta 106**

**22**



**CUSTOM LINE**  
EXCLUSIVE DEALER



**PETREL GLOBAL SHIPS  
& BOATS TRADING LLC**

Office 621, 6th Floor Block A, Business Village,  
Port-Saeed Deira, Dubai UAE  
[www.petrel-global.com](http://www.petrel-global.com), tel.: +971 52 821 6411

**Saetta 106**

**23**



**CUSTOM LINE**  
EXCLUSIVE DEALER



**PETREL GLOBAL SHIPS  
& BOATS TRADING LLC**

Office 621, 6th Floor Block A, Business Village,  
Port-Saeed Deira, Dubai UAE  
[www.petrel-global.com](http://www.petrel-global.com), tel.: +971 52 821 6411

**Saetta 106**

**24**



**CUSTOM LINE**  
EXCLUSIVE DEALER



**PETREL GLOBAL SHIPS  
& BOATS TRADING LLC**

Office 621, 6th Floor Block A, Business Village.  
Port-Saeed Deira, Dubai UAE  
[www.petrel-global.com](http://www.petrel-global.com), tel.: +971 52 821 6411

**Saetta 106**

**25**



**CUSTOM LINE**  
EXCLUSIVE DEALER

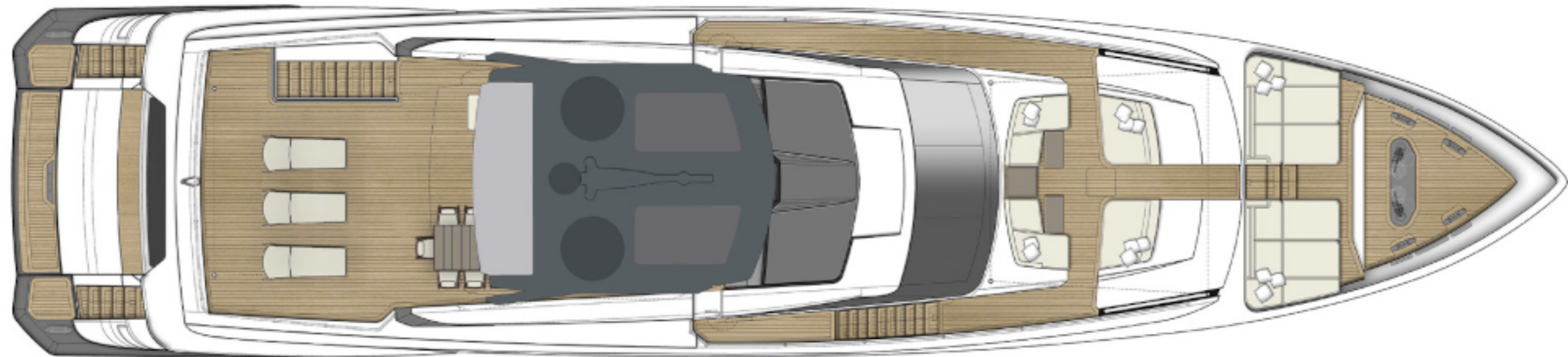


**PETREL GLOBAL SHIPS  
& BOATS TRADING LLC**

Office 621, 6th Floor Block A, Business Village.  
Port-Saeed Deira, Dubai UAE  
[www.petrel-global.com](http://www.petrel-global.com), tel.: +971 52 821 6411

**Saetta 106**

**26**



**CUSTOM LINE**  
EXCLUSIVE DEALER

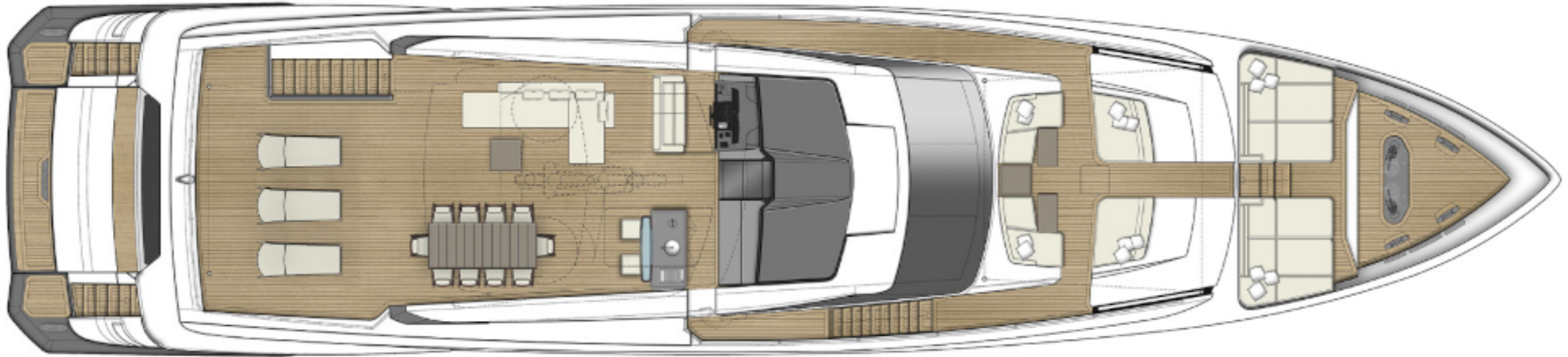


**PETREL GLOBAL SHIPS  
& BOATS TRADING LLC**

Office 621, 6th Floor Block A, Business Village,  
Port-Saeed Deira, Dubai UAE  
[www.petrel-global.com](http://www.petrel-global.com), tel.: +971 52 821 6411

Saetta 106

27



**CUSTOM LINE**  
EXCLUSIVE DEALER

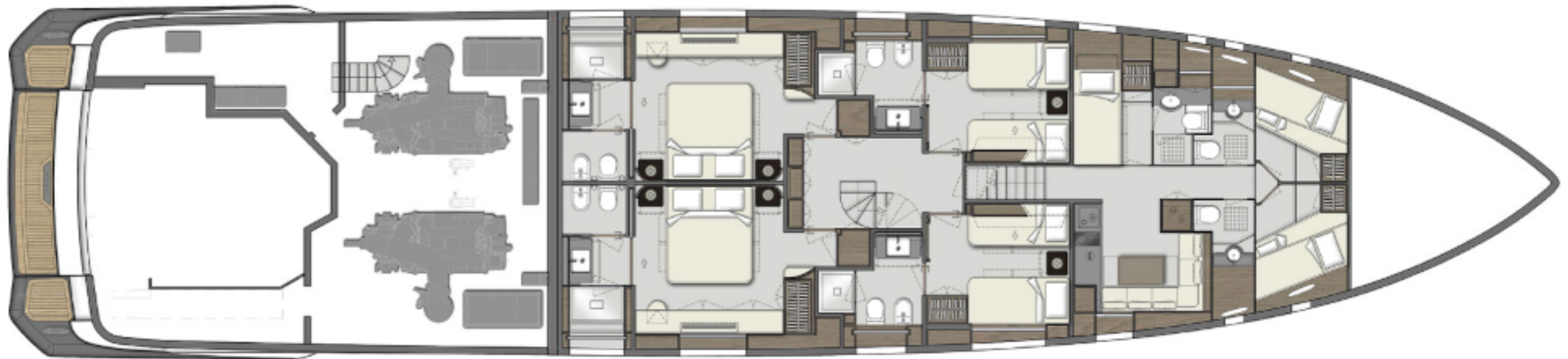


**PETREL GLOBAL SHIPS  
& BOATS TRADING LLC**

Office 621, 6th Floor Block A, Business Village,  
Port-Saeed Deira, Dubai UAE  
[www.petrel-global.com](http://www.petrel-global.com), tel.: +971 52 821 6411

Saetta 106

28



**CUSTOM LINE**  
EXCLUSIVE DEALER



**PETREL GLOBAL SHIPS  
& BOATS TRADING LLC**

Office 621, 6th Floor Block A, Business Village,  
Port-Saeed Deira, Dubai UAE  
www.petrel-global.com., tel.: +971 52 821 6411

Saetta 106

29



**CUSTOM LINE**  
EXCLUSIVE DEALER



**PETREL GLOBAL SHIPS  
& BOATS TRADING LLC**

Office 621, 6th Floor Block A, Business Village,  
Port-Saeed Deira, Dubai UAE  
[www.petrel-global.com](http://www.petrel-global.com), tel.: +971 52 821 6411

Saetta 106

30



**CUSTOM LINE**  
EXCLUSIVE DEALER



**PETREL GLOBAL SHIPS  
& BOATS TRADING LLC**

Office 621, 6th Floor Block A, Business Village,  
Port-Saeed Deira, Dubai UAE  
[www.petrel-global.com](http://www.petrel-global.com), tel.: +971 52 821 6411

**Saetta 106**

**31**

## ADDITIONAL OPTIONS LIST

Cockpit Cover  
 Wine cooler under counter in salon  
 Stern Thruster 60 hp  
 Kohler main and auxiliary genset 55 kW upgrade  
 Fuel oil filling station in garage for diesel tender  
 Automatic parallel system amongst gensets  
 Air Conditioning Super Tropical with UTA  
 Ice maker in main deck  
 Texan grill in Flybridge upgrade  
 Treatment system for black water Hamann  
 Active carbon filter  
 UV sterilizer  
 Watermaker: Idromar 500 l/h (duplex 250+250l/h) upgrade  
 Idrostop system for shaft line seals  
 Fuel oil filter Alfa Laval  
 Teak floor in Flybridge with black caulking  
 Manual bimini in bow sitting area  
 Manual bimini in fly bridge (aft area)  
 Hand shower with removable pole (hot/cold fresh water)  
 Light underwater - 12 in total (5 each side and 2 at aft)  
 Courtesy lights and dimmers for exteriors  
 Courtesy lights and dimmers for interiors (no day toilet)  
 Window with porthole in galley  
 Curtains: electrical raising for lower deck (4 cabins)  
 Automatic opening for aft glass door upgrade  
 Bar cabinet in main deck cockpit  
 Centralized system for engine/inverters/generators oil change  
 Sliding bed in guest cabins  
 Port side window in Master cabin with integrated openable porthole and mosquito net upgrade  
 Starboard side window in Master cabin with integrated openable porthole and mosquito net upgrade  
 Electrohydraulic travel lift in garage, for hauling and launching jet ski  
 Woodboat diff. from std : Alpi graf tbt2b2424/01/be/xv  
 Gyro stabilizers  
 Autoidentification system AIS Furuno Class B (TX-RX FA 70)

Additional control station on Flybridge (starboard side)  
 Camer FLIR night vision  
 A/V Package domotic area A  
 A/V Package Premium sound area A  
 A/V Package premium sound external areas - Sonance  
 A/V Package Premium control area A  
 Antenna TV SAT KVH TV10 with receiver in salon and empty dome  
 TV Samsung 65" in main deck salon upgrade  
 TV Samsung 55" in Master cabin upgrade  
 TV Samsung 50" in starboard vip cabin upgrade  
 TV Samsung 50" in portside vip cabin upgrade  
 Premium WIFI upgrade  
 Radar Furuno Antenna Radome 4kw DRS4D  
 Additional pulman bed in Captain cabin  
 Remote control for electro hydraulic gangway in addition  
 Kit mosquito net for portholes (cabins+bathrooms+crew)  
 Additional insulation between master cabin and galley  
 Cockpit cover - summer version  
 Internet gold package (4 active sim 5G modem)  
 Pullman bed in guest cabin  
 Pullman bed in guest starboard side cabin  
 Super Premium integrated bridge  
 Anti grounding system  
 CEILINGS: NCS 1002 Y 50 R white colour (20 gloss), matt finish  
 Switch plates, internal spotlights, furniture handles, mirror frames: stainless steel satin finish  
 Door handles diff. from std : mod. Beta by Olivari in satin chrome  
 Taps and fittings: STD model by Bongio, finish black Chrome  
 Bathroom diff from STD: model Bongio, finish black Chrome  
 Carpet in LD lobby and cabins diff. From std : Perennials Luxury  
 Performance Rugs col. Custom 02  
 MD to LD stairs handrail diff. from std: double rail upholstered in leather Nuvola by Penelope Oggi col. argilla 280  
 MD to LD stairs: steps in wooden floor with rounded edges  
 MD to wheelhouse stairs handrail diff. From std: double rail in stainless steel chrome finish

MD to main helm stairs: steps in boat wood  
 Wooden floor: european cherry brushed "cherry bark" varnished in salon, MD lobby, pantry, master cabin and dressing  
 Schucko sockets all over the boat to replace the std ones  
 USB type A and C next to each bed (in master, VIP and guest cabins)  
 Mirrors: clear in the bathrooms, decorative ones: bronze  
 Deletion of bidet everywhere  
 Wc with integrated bidet (in day head, LD bathrooms, crew bathrooms) - Toilets with integrated shower and mixer on the side; model WC PLANUS STILO PLUS 230/50 C/BIDET TI  
 Master bathroom: toilet diff. from standard, mod. PLANUS RELAX 230V C/SED.GEBERIT TUMA electric  
 Curtains ADO col.110 white  
 External upholstery: Maria Flora Ginostra 60377 col. 079  
 Bow wall with niche in leather Nuvola col. argilla 280 by Penelope Oggi except for the bottom part to be in lacquered wood same colour as the leather. Side furniture doors and lower central doors in boat wood  
 Columns: upholstered in leather Penelope Oggi nuvola col. 280 argilla  
 Top in marble grigio orobico glossy  
 Sink in white ceramic mod. Ovo  
 Furniture under the sink in boat wood  
 Floor in Florim col. Taupe  
 Panel above the glass niche upholstered in leather Nuvola Argilla col. 280 by Penelopeoggi  
 Niche in bronze glass  
 Bedhead: curved design upholstered in leather Nuvola Argilla col. 280 by Penelopeoggi  
 Wall behind the bedhead: in boat wood  
 Bed frame upholstered in leather Nuvola Argilla col. 280 by Penelopeoggi  
 Tv frame leather Nuvola Argilla col. 280 by Penelopeoggi  
 Bathroom doors: in boat wood  
 Port side cabinet doors: in bronze mirror  
 Bed side tables: structure in lacquered wood same colour as leather



## ADDITIONAL OPTIONS LIST

argilla 280, top in marble grigio orobico glossy

Bow walls (port and stbd side): additional cabinets half height in boat wood, with movable shelves inside. Depth: 65 cm

Additional cabinets on the sides (under the windows) in boat wood with shelves inside

Dressing: in lacquered wood same colour as leather argilla 280, top in marble grigio orobico glossy. Top to be extended on the aft side

Custom layout with big shower plus bench at port side, toilet area at stbd side, double built-in sink in the middle. Additional full length cabinets in boat wood on the side of the 2 sinks. Movable shelves inside. Sink top to be enlarged of 15 cm on both sides compared to the layout shown

Mirror above the sink top

Full length cabinet in boat wood instead of the bidet included in bathroom custom layout

Floor and shower floor in florim col. Taupe

Marble grigio orobico glossy for: built-in sink, sink top and backsplash, wall behind the sink backsplash, shower walls (forward and aft)

Shower side bulwark in lacquered wood NCS 1002 Y 50 R matt finish

Toilet area aft and bow walls in boat wood, bulwark in lacquered wood NCS 1002 Y 50 R matt finish

Cabinets in lacquered wood col. Silk grey matt. Top in quartz easy Spezia

Floor in vinyl gerflor HQR 1876 Harlem Fer

Miele appliances upgrade included in the contract: to be deleted

STD galley appliances replaced by Siemens appliances

Side by side fridge by Siemens with no icemaker

No microwave, but storage

Trash compactor

Cabinets in lacquered wood col. Silk grey matt. Top in quartz easy Spezia

Fixed table

Dashboard in simil leather, black colour

Premium integrated bridge by Simrad included in the contract to be replaced by Super Premium integrated bridge by Furuno

AIS by Simrad included in the contract to be replaced by Furuno

Sofa upholstery: Maria Flora Kimono Pattern Stuoia 6037 col. 94

Wooden floor: european cherry brushed "cherry bark" varnished in wheelhouse

Wall in front of the stairs in bronze mirror

Wall at aft in boat wood

Bed head: std design upholstered in leather Penelopeoggi Nuvola argilla 280

Bronze mirror above the bedhead

Bed frame: upholstered in leather Penelopeoggi Nuvola argilla 280

Vanity desk top diff. From std : in leather Nuvola Argilla 280

Bed side tables: structure in lacquered wood same colour as the leather argilla 280 by Penelopeoggi, matt finish

Ottoman under the vanity desk upholstered in leather argilla 280

Bed head: full width panel with std design upholstered in leather Penelopeoggi Nuvola col 280 argilla

Bronze mirror above the bedhead

Bed frame: upholstered in leather Penelopeoggi Nuvola col. 280 argilla

Bed side tables: structure in lacquered wood same colour as the leather argilla 280 by Penelopeoggi, matt finish

Pullman bed in both cabins with bronze mirror included in OPT for pullman beds

Bathrooms and shower floor in Florim col. taupe

Built-in sink, sink top and shower walls in marble grigio orobico glossy (4 bathrooms)

Storage to replace the bidets

Deletion of Miele washer and dryer

Combi washer and dryer by Siemens and additional fridge above them

Deletion of TV in captain cabin included in the contract

Bigger TV with telescopic arm in crew dinette

Floor in vinyl gerflor HQR 1876 Harlem Fer

Fenders one size bigger than STD. Terminal part of fenders in black color, fender covers in black color

Additional external sockets - 3 pcs - n. 1 on Fly, n. 1 in MD cockpit, n.

1 in Bow dinette

Sofa Belloalto by Bonaldo diff. From std: upholstered in fabric Rico col. MA01 CAT MUST

Coffee table Isabey by Bonaldo diff. From std: with top in carrara marble and structure in matt black metal. Dim.160 X 95 cm

Side table Isabey by Bonaldo with top in Caharcoal oak and structure in matt black oak. Dim. 40x80 cm

Armchair Avant Garde by BONALDO upholstered in leather Capri L08

Dining table diff. from std: mod. Flame by Bonaldo with top in carrara marble and structure in bronze metal. Dim. 280x110 cm

Dining chairs diff. From std: mod. Miss Mask by Bonaldo upholstered in leather CAPRI L30. 10 pcs

Freestandings diff. from std: Sofa Jun by Talenti upholstered in fabric Cliff Pillows/Scacco collection C13 white; coffe table Bitta

by Kettal with top and structure in bone 04C; n. 3 sun beds mesh by Kettal with structure in teak +04c, mattress cushion 03L; n. 2 stools

harp by Roda with rope col. sand and structure in metal col. milk; n. 8 Dining chairs net by Kettal with structure in milk colour, rope z04

Bela, seat and back cushion 03L

Wiring preparation for backlit name



# BEYOND THE LINE



**CUSTOM LINE**  
EXCLUSIVE DEALER



**PETREL GLOBAL SHIPS  
& BOATS TRADING LLC**

Office 621, 6th Floor Block A, Business Village,  
Port-Saeed Deira, Dubai UAE  
[www.petrel-global.com](http://www.petrel-global.com), tel.: +971 52 821 6411